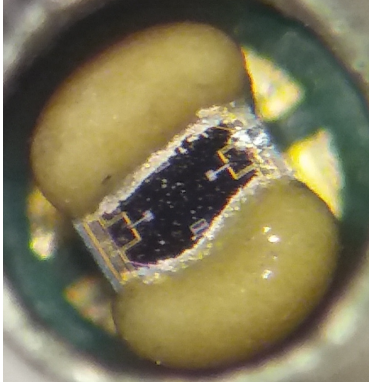


## Ultra small pressure sensor for harsh environment

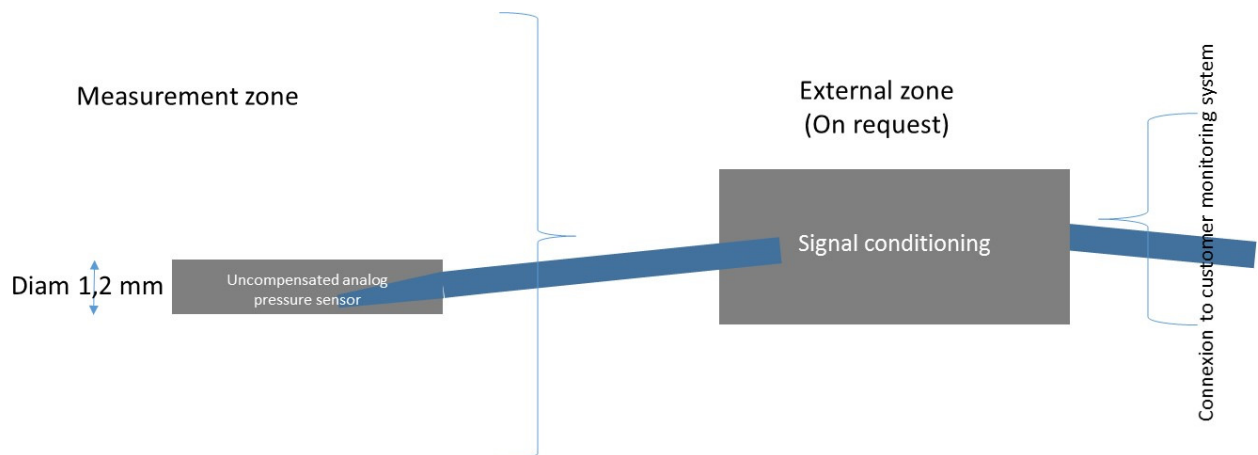


### OVERVIEW

- Outer diameter 1,2 mm
- 2 Bar Absolute pressure sensor
- Burst pressure 10 bar
- Wide temperature range -40C to 200C
- Harsh environment
- Customized solution possible
- mVolt output

### APPLICATIONS

- Instrumentation (ie: Automotive, ...)
- Aerodynamic testing (ie: wind tunnel)
- Industrial process monitoring
- Pumps
- Biomedical
- Oil and gas
- ...



Part Number	MiniP_1,2_002_A_LT	MiniP_1,2_002_A_HT
Outer diameter	1,2mm	1,2mm
Pressure range <sup>1</sup>	0-2 bar	0-2 bar
Proof pressure <sup>1</sup>	6 bar	6 bar
Burst pressure <sup>1</sup>	10 bar	10 bar
Bridge resistance	6,2 kΩ typical (5-7 kΩ)	6,2 kΩ typical (5-7 kΩ)
Vout span	100 mV typical (65-135mV)	100 mV typical (65-135mV)
Tmax <sup>2</sup>	100 Celsius	200 Celsius
Accuracy <sup>3</sup>	0,5% @ FS	0,5% @ FS
Signal amplification	None	None
Fluid	Dry air or inert gas	Dry air or inert gas

Remark: All sensors are provided with a control sheet given pressure level versus mVolt @ 25 C under a supply voltage of 5 Volt.

1. Absolute pressure
2. TMCL qualification tests – JEDEC JESD22-A104 « temperature cycling » @ Tmax
3. Accuracy @25 Celsius